

Example 4.9

customer - database sav

What is the p-value?

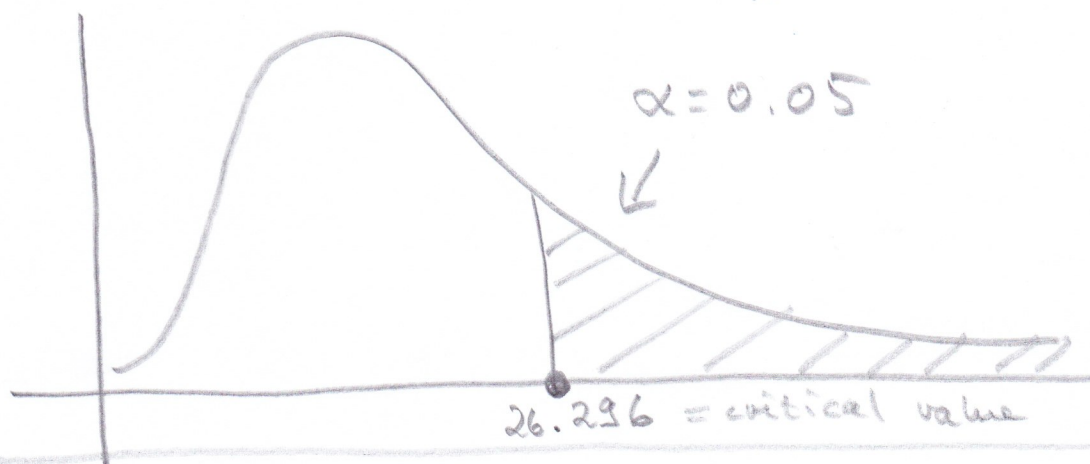
$X = \text{job-category}$ (nominal)

$Y = \text{job-satisfaction}$ (ordinal)

$H_0: X, Y$ stochastically independent

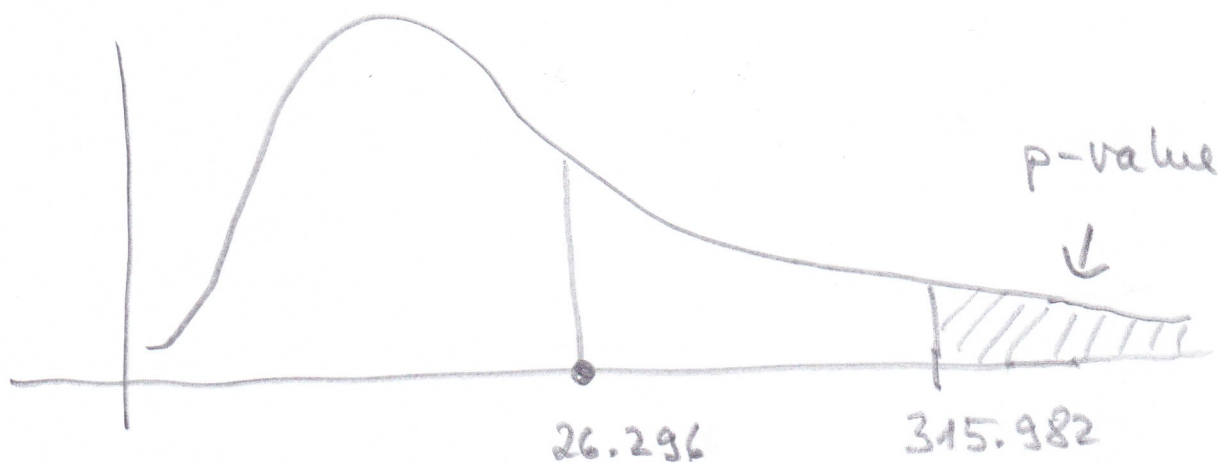
Rejection of H_0 if the differences between the observed and the expected frequencies are "too large":

χ^2 -distribution, $df = 16$



Rejection of $H_0 \Leftrightarrow \chi^2_{\text{emp}} \geq 26.296$

$$\chi^2_{\text{emp}} = 315.982$$



Rejection of $H_0 \Leftrightarrow \text{p-value} \leq 0.05$